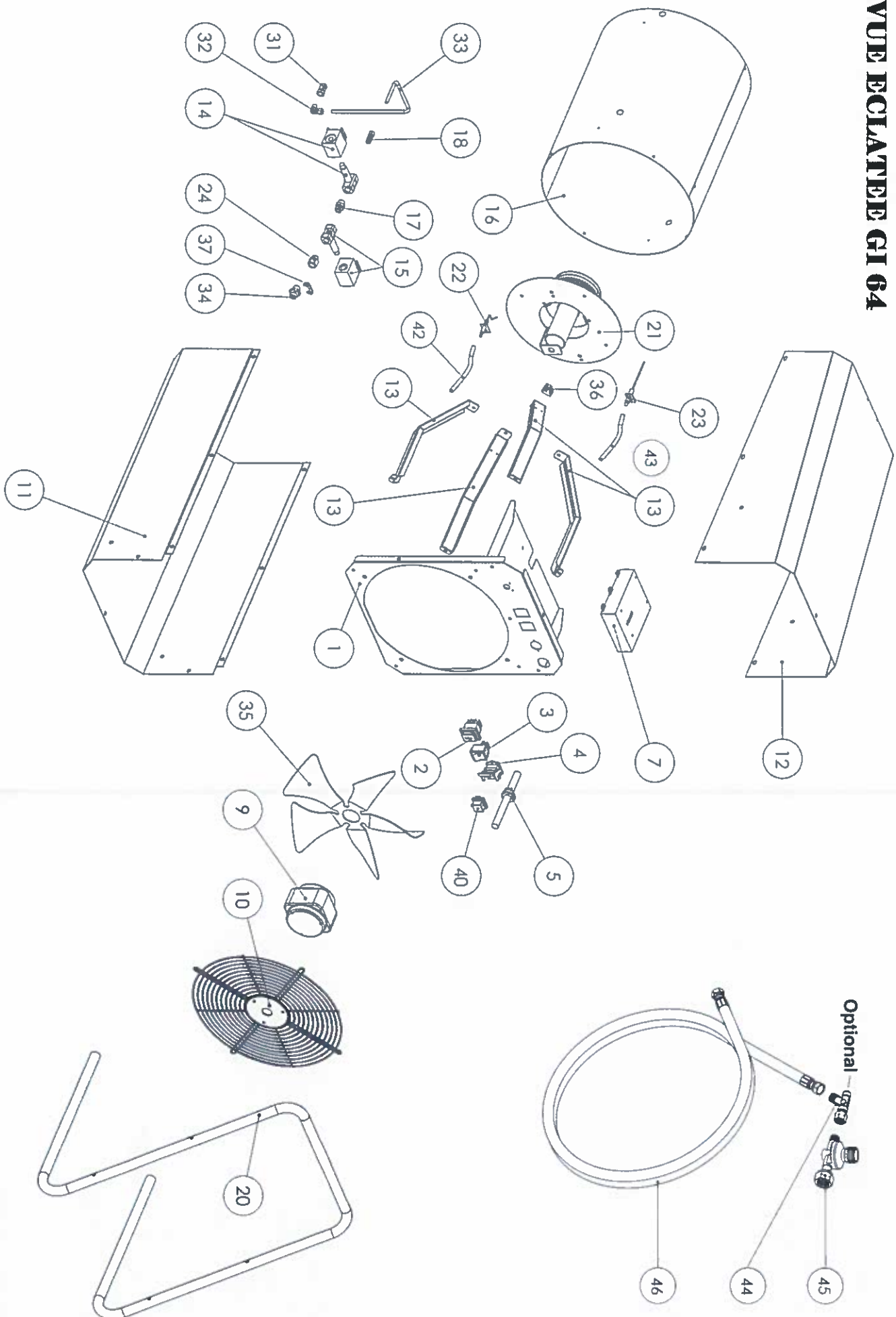


THERMOBILE[®]

VUE ECLIPSE CI 64



VUE ECLAIRÉE GI 64

THERMOBILE®

PL 07/11		Da N.° serie	De No. Serie	Von Masch. Nr.	From S/N	
		48200000				
POS	PIN	LEGENDA	DESCRIZIONE	DESCRIPTION	BESCHREIBUNG	DESCRIPTION
1	G03289-X	-	Pannello	Panneau	Verteidigungsplatte	Panel
2	E10102-P	I - 0 - II	Interruttore bipolare	Interrupteur	Zweipoliger Schalter	Switch
3	E10133	-	Pulsante namo	Poussoir réarmement	Reset-Taste	Reset button
4	E20689	3P+T	Connettore presa	Fiche thermostat	Steckdose	Thermostat plug
5	E30457	L = 1,5 m - SCHUKO	Cavo alimentazione elettrica	Câble d'alimentation	Stromversorgungskabel	Power cord
7	E40130	VULCANO 77 - 230V	Apparecchiatura controllo fiamma	Disp Contrôle flamme	Flammenüberwachung	Flame control box
9	E10744	220 W - 230 V - 50 Hz	Motore	Moteur	Motor	Motor
10	P30189	-	Griglia aspirazione	Grille aspiration	Ansauggitter	Inlet grill
11	G03290-X	-	Carozzeria inferiore	Carrosserie inf.	Carrosserie Unterteil	Lower body
12	G03291-X	-	Carozzeria inferiore	Carrosserie inf.	Carrosserie Unterteil	Lower body
13	G03292	-	Staffa supporto bruciatore	Bride de fixation brûleur	Trägerbügel Brenner	Burner support bracket
14	T30203	VE131 4-220 V	Elettrovalvola	Electrovanne	Magnetventil	Solenoid valve
16	G03294	-	Camera di combustione	Chambre de combustion	Brennkammer	Combustion chamber
17	I20104	1/4" M - 1/4" M	Raccordo ferro	Raccord fer	Anschluss, Eisen	Iron fitting
18	I30864	1/4" M / Ø6	Raccordo bicone	Raccord pour bicone	Doppelkegelanschluss	Connection bicone
20	P20198-9005	-	Meninglia	Poignée	Griff	Handle
21	G03293	-	Testa di combustione	Brûleur	Brennkopf	Combustion head
22	E10213	-	Elettrodo accensione	Électrode allumage	Zündelektrode	Ignition electrode
23	E10214	-	Elettrodo ionizzazione	Électrode ionisation	Ionisationselektrode	Ionisation electrode
24	I20427	1/4" F - 1/4" M	Raccordo	Raccord	Fitting	Fitting
31	I33015	G1/8" F - Ø 1,5	Ugello gas	Gicleur	Gasdüse	Nozzle
32	I30689	1" M - 1" M - 1/2" F	Raccordo	Raccord	Fitting	Fitting
33	I42016	Ø 6 x Ø 4	Tubo rame	Tuyau cuivre	Kupferrohr	Gas supply pipe
34	I30739	1/4" Mdx - 1/4" Mx	Raccordo oltone	Raccord lation	Messingfitting	Brass fitting
35	T10277	Ø 300 - 19"	Ventola	Ventilateur	Lüfter	Fan
36	E50103	V10C	Termostato di sicurezza	Thermostat de sécurité	Sicherheitsthermostat	Safety thermostat
37	G03194	-	Staffa blocco raccordo	Élèmer bloc raccordement	Blockierbügel für Anschluss	Fitting lock bracket
40	E20665	-	Coperchio presa termostato	Couvercle prise thermostat	Deckel Thermostatbuchse	Thermostat plug cover
42	E00389	L=350 mm	Cavo alla tensione	Conn. câble	Hochspannungskabel	H.T. Cable connect.
43	E00396	L=350 mm	Cavo ionizzazione	Câble ionisation	Ionisationskabel	Ionisation cable
44	03AC504	8,5 kg - 3/8" G	Valvola sicurezza "stop-gas"	Sécurité stop-gaz	Gas-Stopp-Sicherheitsventil	Excess flow valve
45	170415R	IT	Regolatore pressione gas	Manodétendeur	Gasdruckregler	Pressure regulator
45	170415RF	FR	Regolatore pressione gas	Manodétendeur	Gasdruckregler	Pressure regulator
46	I40554	1/4" Fsx-3/8" Fsx-L=1,5m	Tubo gas	Tuyau du gaz	Gas Schlauch	Gas hose